

This blank area falls outside the coverage
of the relevant Aerial Photograph
鳥瞰照片並不覆蓋本空白範圍



Survey and Mapping Office, Lands Department, The Government of HKSAR © Copyright reserved - reproduction by permission only.

香港特別行政區政府地政總署測繪處©版權所有，未經許可，不得複製。

Adopted from part of the aerial photograph taken by the Survey and Mapping Office of Land Department at a flying height of 6,000 feet, photo No.E030302C, date 27 December 2017.

摘錄自地政總署測繪處於2017年12月27日在6,000呎飛行高度拍攝之鳥瞰照片，編號為E030302C。



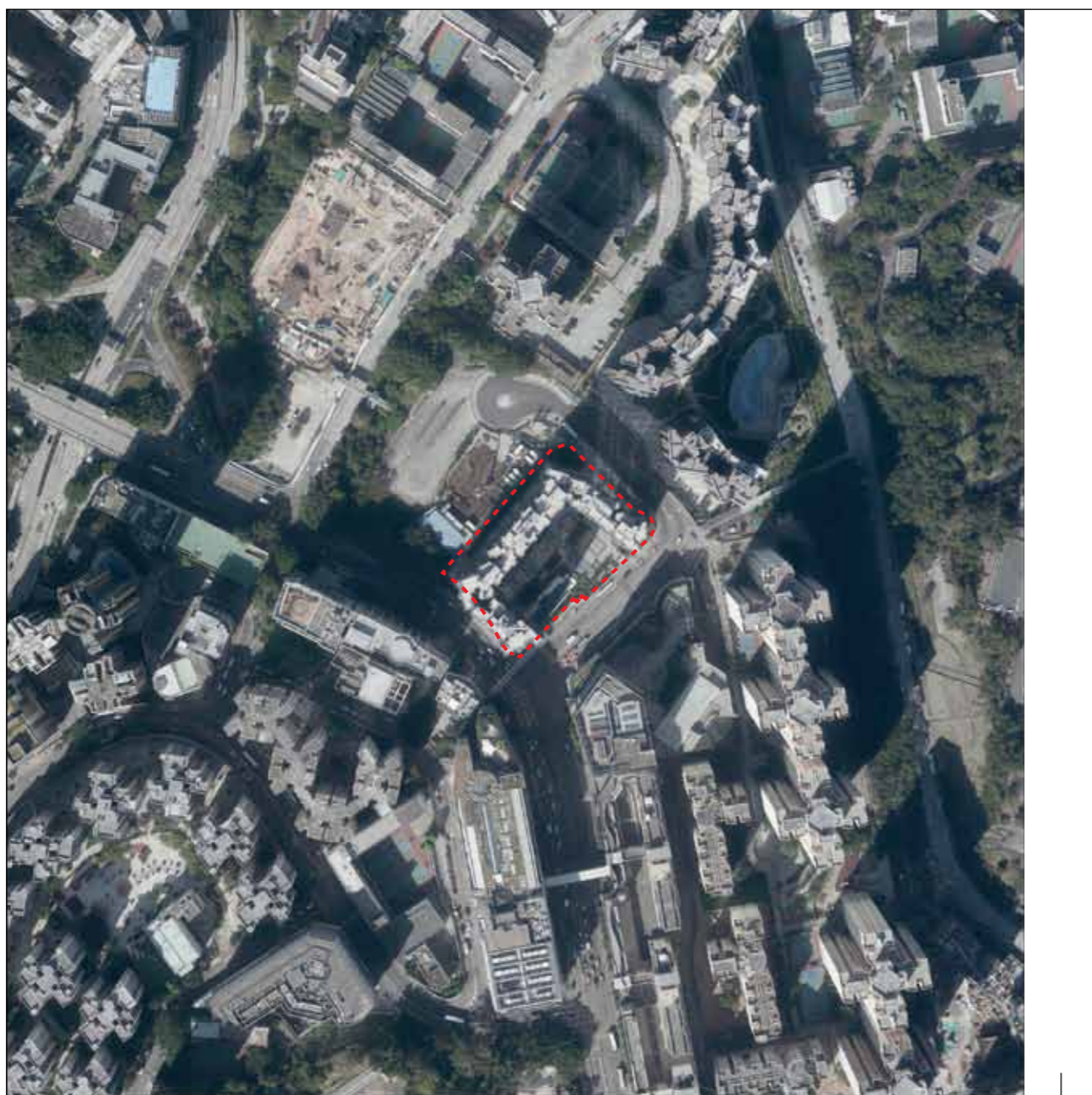
LOCATION OF THE DEVELOPMENT
發展項目的位置

Remarks:

Due to technical reasons (such as the shape of the Development), the aerial photograph has shown more than the area required under the "Residential Properties (First-hand Sales) Ordinance".

備註：

因技術原因（例如發展項目之形狀），鳥瞰照片所顯示的範圍多於《一手住宅物業銷售條例》所要求。



This blank area falls outside the coverage of the relevant
Aerial Photograph
鳥瞰照片並不覆蓋本空白範圍

Survey and Mapping Office, Lands Department, The Government of HKSAR © Copyright reserved - reproduction by permission only.

香港特別行政區政府地政總署測繪處©版權所有，未經許可，不得複製。

Adopted from part of the aerial photograph taken by the Survey and Mapping Office of Land Department at a flying height of 6,000 feet, photo No.E030944C, date 27 December 2017.

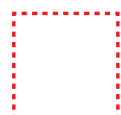
摘錄自地政總署測繪處於2017年12月27日在6,000呎飛行高度拍攝之鳥瞰照片，編號為E030944C。

Remarks:

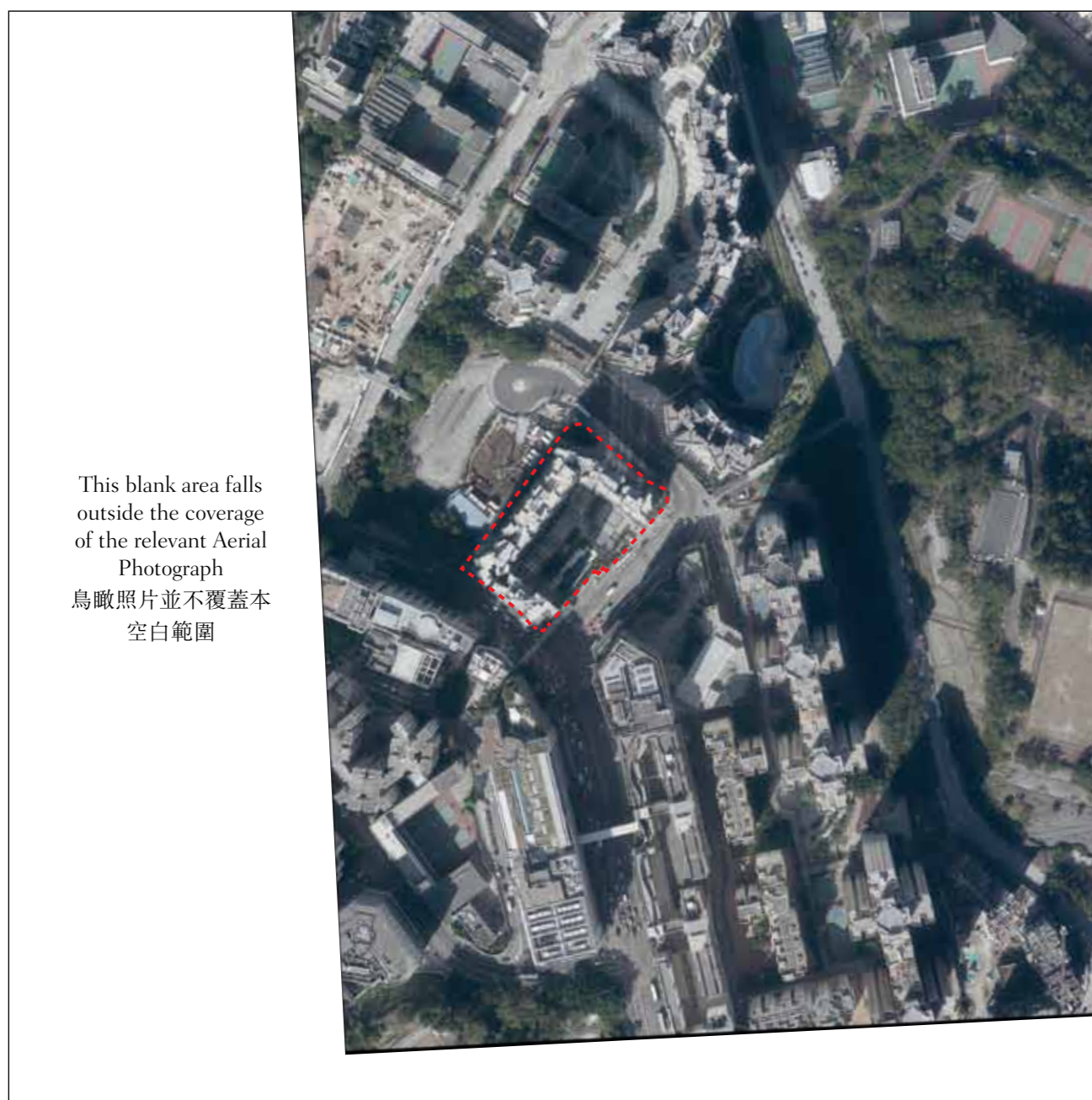
Due to technical reasons (such as the shape of the Development), the aerial photograph has shown more than the area required under the "Residential Properties (First-hand Sales) Ordinance".

備註：

因技術原因（例如發展項目之形狀），鳥瞰照片所顯示的範圍多於《一手住宅物業銷售條例》所要求。



LOCATION OF THE DEVELOPMENT
發展項目的位置

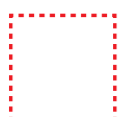


Survey and Mapping Office, Lands Department, The Government of HKSAR © Copyright reserved - reproduction by permission only.

香港特別行政區政府地政總署測繪處©版權所有，未經許可，不得複製。

Adopted from part of the aerial photograph taken by the Survey and Mapping Office of Land Department at a flying height of 6,000 feet, photo No.E030945C, date 27 December 2017.

摘錄自地政總署測繪處於2017年12月27日在6,000呎飛行高度拍攝之鳥瞰照片，編號為 E030945C。



LOCATION OF THE DEVELOPMENT
發展項目的位置

Remarks:

Due to technical reasons (such as the shape of the Development), the aerial photograph has shown more than the area required under the "Residential Properties (First-hand Sales) Ordinance".

備註：

因技術原因（例如發展項目之形狀），鳥瞰照片所顯示的範圍多於《一手住宅物業銷售條例》所要求。